

The background features a grid of dark grey, 3D-rendered hexagons. One hexagon in the upper right quadrant is highlighted in a vibrant green color. A blue rounded rectangle is positioned on the left side of the image, containing the company logo and text.

swissbit®

## WHAT MAKES THE DIFFERENCE

THE SECRET OF SWISSBITS PRODUCT OPTIMIZATION

Best Service Memory Company

Not all cards are the same



Swissbit cards are different

# Swissbit SD memory cards



WHAT MAKES THEM DIFFERENT

100% industrial temp NAND

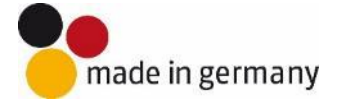
OEM grade NAND quality

Dedicated industrial grade controller

Firmware optimized for industrial requirements

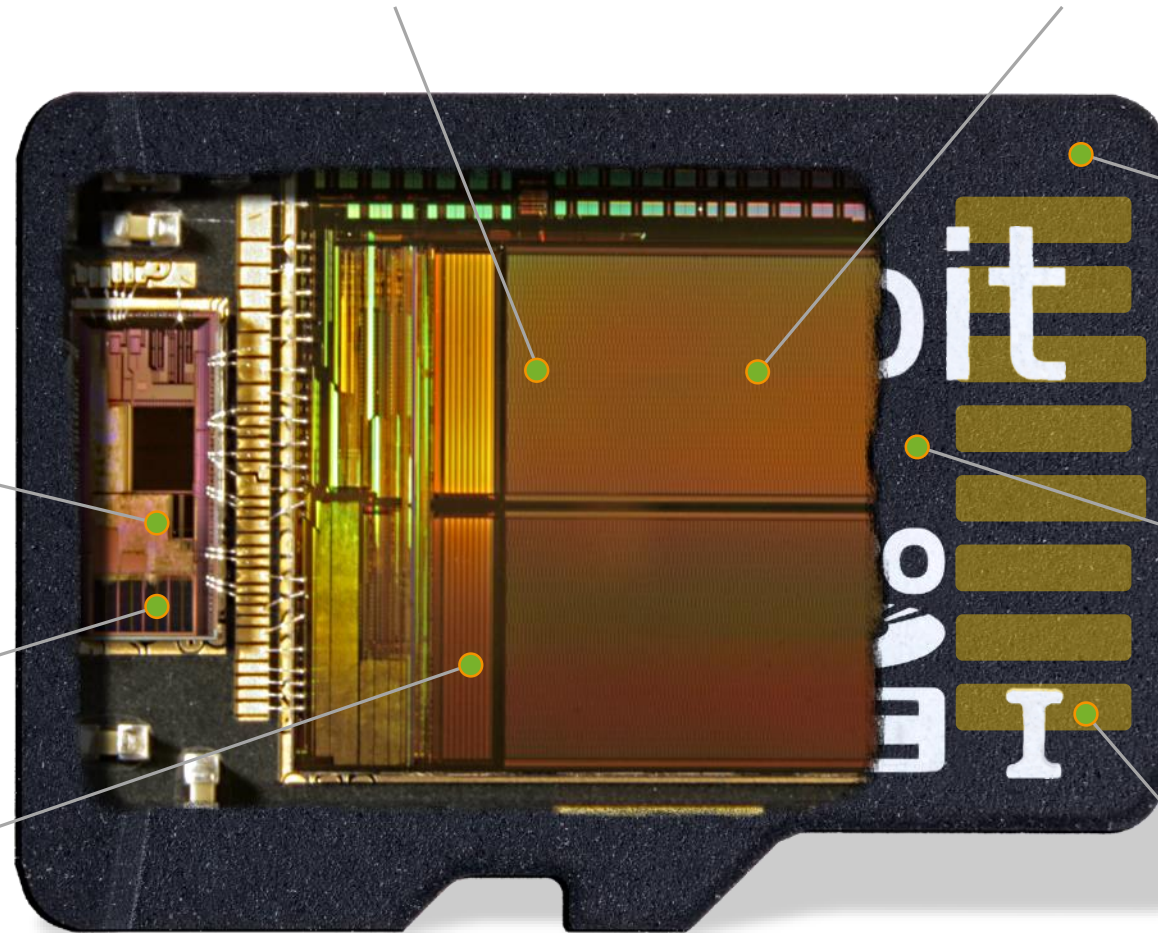
Support for Life Time Monitoring

Manufactured in automotive certified Swissbit fab



Longevity components and locked BOM

30u" gold contacts, non porous, 10'000 insertions



# Swissbit Solid State Disks

WHAT MAKES THEM DIFFERENT

swissbit®

Robust die cast housing

Dedicated industrial grade controller

DRAM support for superior performance

Firmware optimized for industrial requirements

OEM grade NAND quality, 100% industrial temp NAND

Swissbit designed PCB, temperature cycle resistant

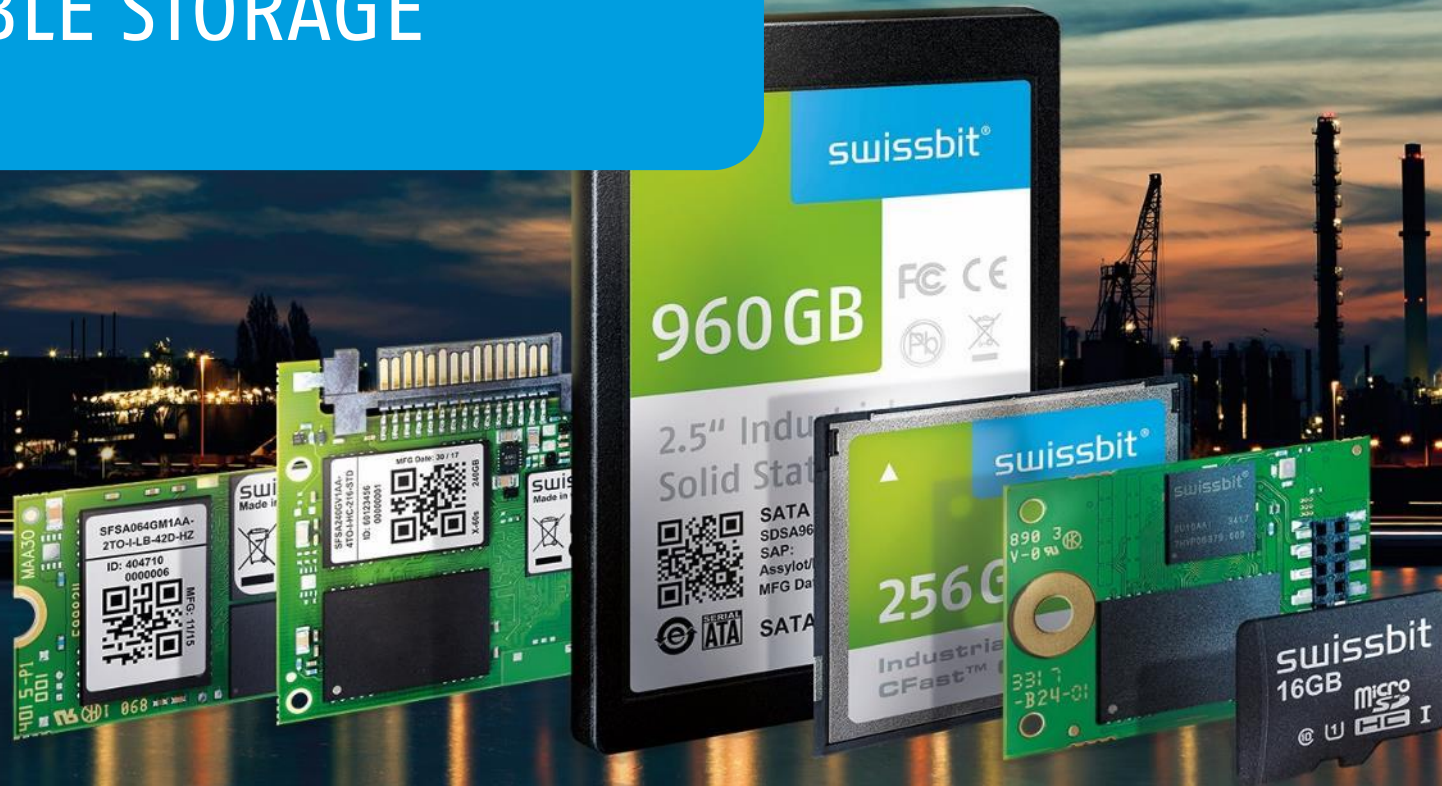
Longevity components and locked BOM

100% outgoing test @ temperature grade

Increased gold layer thickness on contacts



# SWISSBIT – YOUR PARTNER FOR RELIABLE STORAGE



Best Service Memory Company